

3 Labour

The conceptual framework adapted by the ABS for collecting labour force statistics (as shown in figure 6 on page 38) is compatible with the standards for labour force classification recommended by the International Labour Organisation.

Employment and unemployment

In August 1987 there were 1,931,200 employed persons in Victoria, an increase of 5 per cent over the year. This represented 59 per cent of the civilian population aged 15 years of age and over and 27 per cent of employed persons across Australia. A total of 122,000 Victorians were unemployed in August 1987. This unemployment rate of 5.9 per cent of the labour force compared with an Australian average unemployment rate of 7.8 per cent. The Victorian unemployment rate varied markedly within the State. In the Melbourne Statistical Division it was highest in Inner Melbourne (6.7 per cent) and lowest in Southern Melbourne (3.6 per cent). In country Victoria it ranged between 8.7 per cent in Eastern Victoria and 6.2 per cent in South Western Victoria.

Since the mid 1960's the Victorian unemployment rate has been generally lower than the National unemployment rate. During the early 1980's the seasonally adjusted unemployment rate increased from just below 6 per cent to a peak of over 9 per cent in 1983. Since 1983 there has been a sustained decline in the unemployment rate.

Participation rate

In the last twenty years the movement in participation rates varied according to age. The participation rates of the young population (under 20 years) and the older age groups (55 years and over) have declined. During the same period however the participation rates for people in the 20 to 54 year age group have risen markedly.

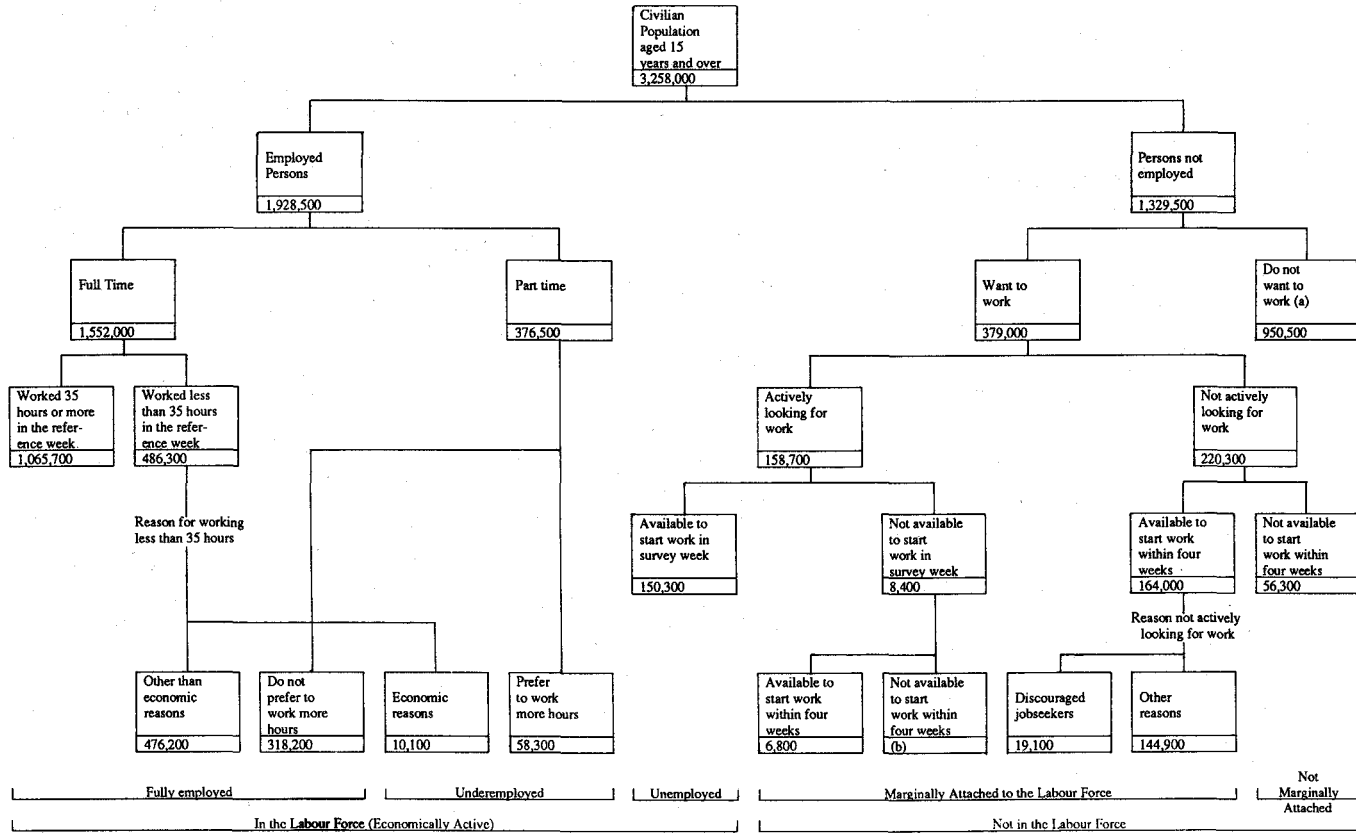
During the last twenty years women have played an increasingly significant role in the labour force. The participation rate for all females has risen from 39.2 per cent to 49.8 per cent while the rate for married females has risen from 33.6 per cent to 49.9 per cent. Over the same period the rate for males has dropped from 83.5 per cent to 75.7 per cent.

Labour mobility

In Victoria, 1,855,400 persons were employed in February 1986. Of those employed persons, 450,900 had been in their current job less than twelve months, while 380,500 had been there for 10 years or more.

Labour force experience

In Victoria, during the twelve months ending February 1986, there were 2,148,100 persons who had been in the labour force at some time. Of these, 1,373,300 had worked for the whole period and 657,400 had worked for part of that period. Of the 332,800 persons who looked for work at some time during the year, 42,600 persons had looked for work for the whole twelve months.

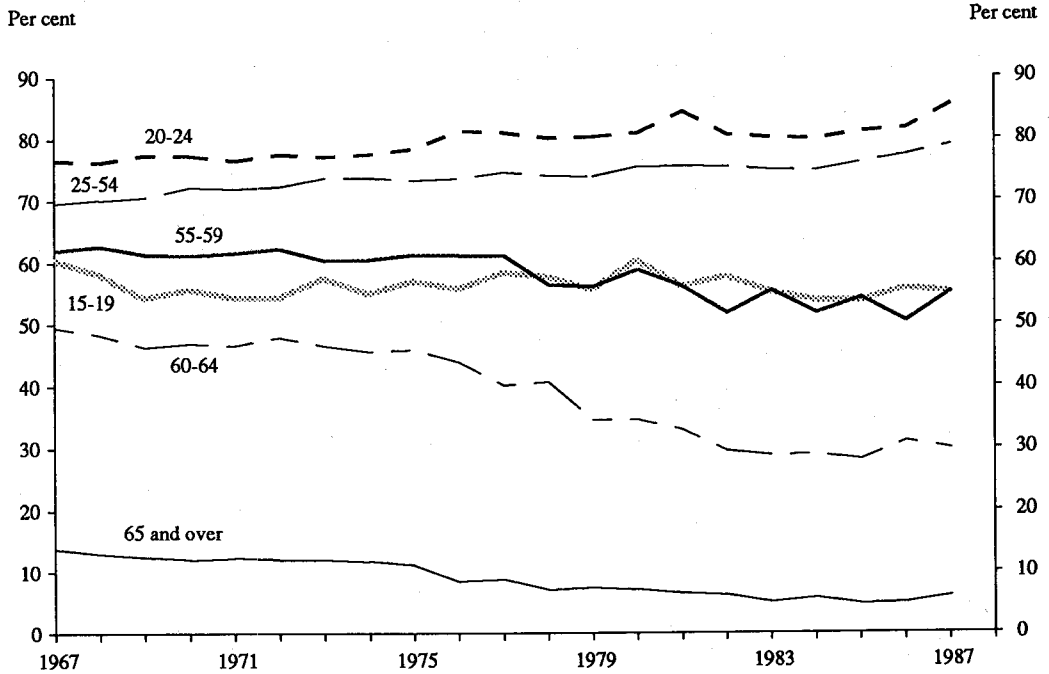


(a) Includes institutionalised boarding school pupils and persons permanently unable to work.

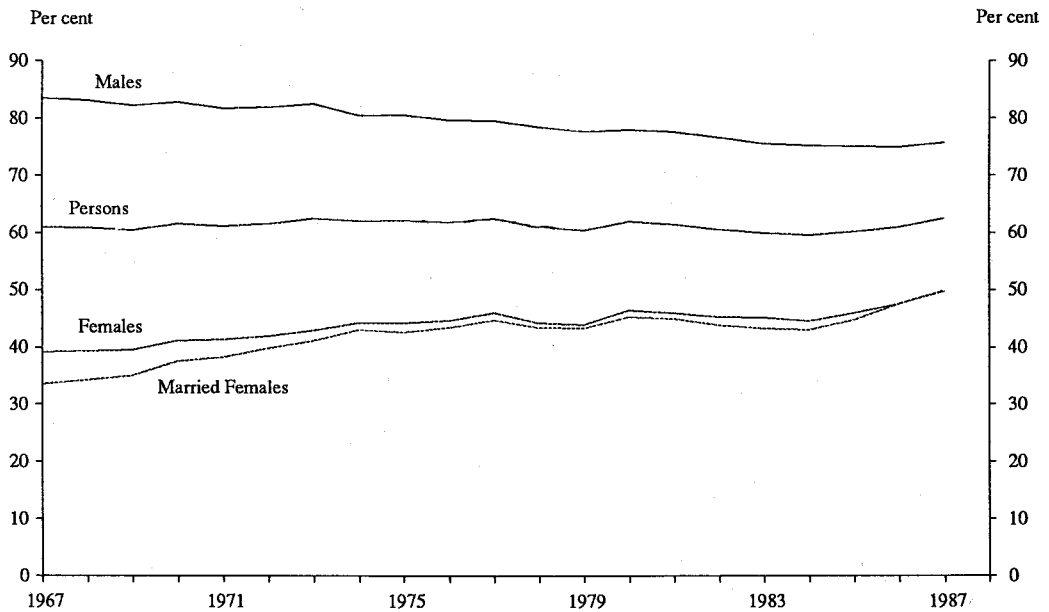
(b) Subject to sampling variability too high for most practical purposes.

Figure 6. The labour force framework, Victoria, March 1987

**PARTICIPATION RATES BY AGE, VICTORIA
(August)**



**PARTICIPATION RATES BY SEX, VICTORIA
(August)**



Persons not in the labour force (including discouraged jobseekers)

In March 1987 there were an estimated 1,179,200 persons aged 15 and over who were not in the labour force in Victoria. These people constituted 36.2 per cent of the civilian population. The number of persons who were discouraged jobseekers was 19,100. The majority of discouraged jobseekers had previous work experience. Most discouraged jobseekers had not looked for work within the last twelve months, with only 30.1 per cent having done so.

Job search experience

In Victoria there were an estimated 111,000 unemployed persons (excluding those who were stood down) in June 1986. There were 17,400 persons (15.7 per cent) who claimed that the main difficulty in finding work was that employers considered them too young or too old, and 16,500 persons (14.9 per cent) who said there were no vacancies in their line of work. Of the remaining unemployed, 11,200 persons (10.1 per cent) claimed they had experienced no difficulties.

Industry and occupation

Since 1980 the number of employed wage and salary earners in Victoria has increased by 14.1 per cent. Most industries showed an increase with two notable examples being Finance, property and business services rising by 52.2 per cent and Community services increasing by 31.3 per cent. Decreases were recorded for the Electricity, Gas, and Water division, down 19.6 per cent and the Manufacturing division, down 7.7 per cent.

In August 1987 over 40 per cent of people employed in the Community services division were professionals whilst only 2 per cent of persons in the Wholesale and retail division were classified as professional. In the Manufacturing division just on 45 per cent of employed persons were plant operators or labourers while in the Construction division the corresponding figure is just over 19 per cent.

Earnings and hours

Since 1982, the average weekly hours worked by employed wage and salary earners in Victoria has changed minimally. However the average weekly hours worked vary markedly by industry. The Mining division was the only industry whose employees averaged in excess of 40 hours per week in August 1987. At the other end of the scale, average hours per week in the Retail trade subdivision and the Recreation, personal, and other services division were in the high twenties which reflects the greater usage of casual and part-time employees.

Full-time employees in the Mining division recorded the highest average weekly earnings in May 1987. The lowest average belonged to employees in the Retail division. While the average for the Manufacturing division was close to the all industries average there was a wide range across subdivisions within the manufacturing sector. Average earnings for employees in the Chemical, petroleum, and coal products subdivision were 36.2 per cent higher than those of employees in the Textile, clothing, and footwear subdivision. Generally female average weekly earnings were lower than the average for males. However the size of the difference varied markedly by industry division. The difference was greatest in the Construction division where females' average weekly earnings represented 56.8 per cent of the male average.

In August 1986, only 3.1 per cent of wage and salary earners aged 15 to 19 years earned in excess of \$320 per week, while 39.4 per cent of wage and salary earners aged 20 to 24 years earned more than \$320 per week. Of the 119,400 employees earning \$600 and over per week, two-thirds were aged 25 to 44 years.

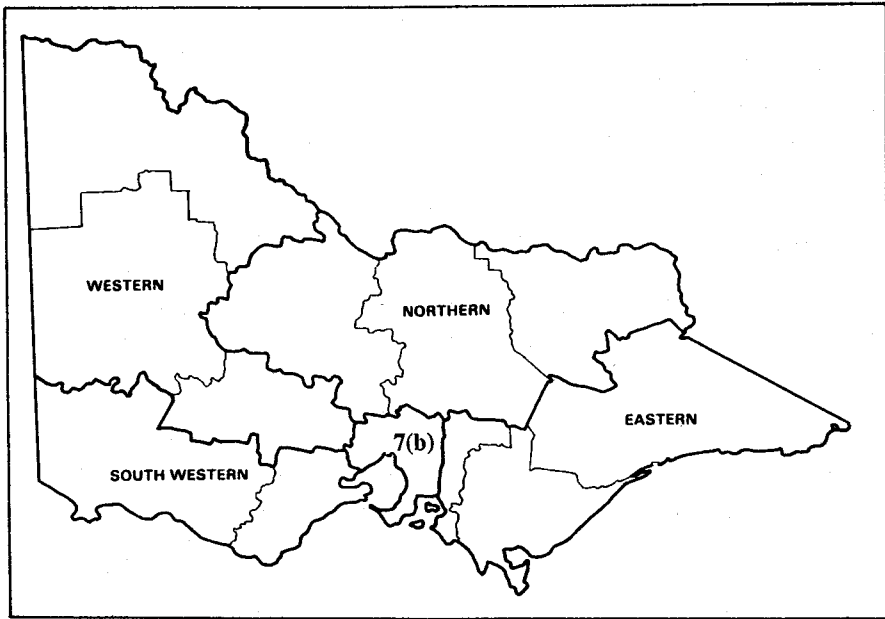


Figure 7(a). Labour force regions, Victoria

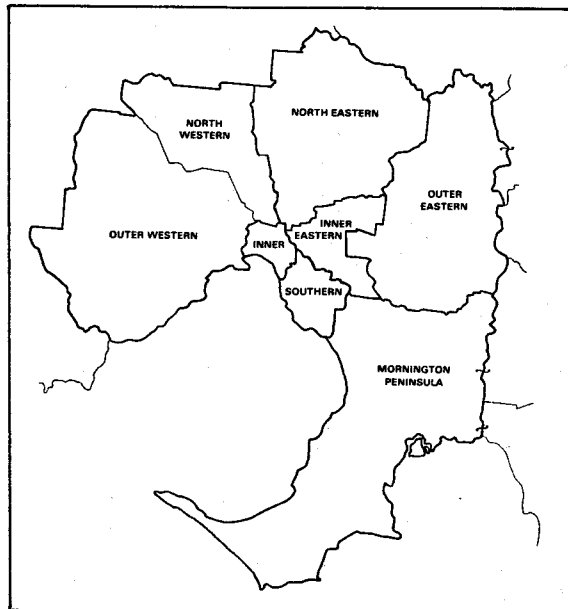


Figure 7(b). Labour force regions, Melbourne Statistical Division

TABLE 3.1 EMPLOYED PERSONS, BY AGE, VICTORIA ('000)

Month	Age group (years)								Total	
	15-19	20-24	25-34	35-44	45-54	55-59	60-64	65 and over		
MALES										
1986 -	June	85.8	143.9	303.8	271.4	182.9	75.5	43.9	16.0	1,123.3
	July	83.1	142.9	303.3	267.2	181.6	72.3	45.3	16.3	1,112.0
	August	86.4	140.2	301.2	269.8	179.7	71.3	44.3	16.2	1,109.1
	September	92.6	141.7	306.9	273.1	183.0	72.0	45.8	15.6	1,130.8
	October	89.5	147.4	307.4	273.3	182.6	70.9	43.8	15.6	1,130.2
	November	91.1	143.7	305.9	269.2	181.3	71.8	42.4	17.0	1,122.4
	December	102.4	148.9	305.9	269.8	181.4	73.4	44.4	17.0	1,143.2
1987 -	January	98.6	147.0	301.8	271.7	178.1	70.3	42.5	15.3	1,125.2
	February	94.9	150.2	307.3	272.8	180.0	72.6	42.1	17.9	1,137.8
	March	97.4	147.6	310.7	276.0	186.6	74.7	42.2	20.4	1,155.7
	April	94.2	149.0	306.9	275.7	182.4	72.8	40.5	22.0	1,143.6
	May	92.9	152.2	308.2	276.7	186.3	73.1	40.8	18.6	1,148.8
	June	94.4	152.1	310.6	277.4	183.5	75.1	40.1	22.0	1,155.2
	July	99.4	152.0	308.6	278.7	186.6	73.4	41.7	20.7	1,160.9
	August	89.8	152.6	311.7	281.3	187.2	73.2	41.0	18.4	1,155.3
FEMALES										
1986 -	June	81.4	126.9	199.0	175.1	108.8	28.7	11.6	6.6	738.0
	July	81.6	122.5	202.8	182.9	112.1	26.4	11.4	7.6	747.3
	August	75.7	121.6	194.3	180.6	109.1	24.9	12.8	5.6	724.6
	September	82.5	124.9	200.1	183.9	111.8	28.8	14.5	6.5	752.9
	October	83.7	127.3	203.1	185.4	110.8	26.9	13.0	6.2	756.4
	November	86.9	122.7	200.8	183.1	110.6	30.9	13.2	7.0	755.2
	December	93.2	128.9	198.6	185.7	110.5	31.3	12.1	6.3	766.7
1987 -	January	92.1	123.7	193.8	170.9	102.0	32.5	12.2	7.1	734.3
	February	84.3	128.2	198.9	180.2	104.4	33.0	13.2	7.3	749.6
	March	81.5	131.2	208.1	187.3	108.6	34.2	15.2	6.6	772.8
	April	85.6	131.2	212.6	188.6	104.0	31.3	14.3	8.1	775.7
	May	86.6	129.7	211.4	190.7	108.2	31.7	15.3	6.4	780.1
	June	79.3	127.6	211.7	192.9	106.6	32.0	15.7	7.7	773.5
	July	86.1	130.1	210.2	193.2	112.1	32.5	12.0	8.5	784.6
	August	78.1	125.1	212.4	193.4	112.7	32.7	12.4	9.0	775.9
PERSONS										
1986 -	June	167.2	270.8	502.8	446.5	291.7	104.2	55.5	22.6	1,861.3
	July	164.7	265.4	506.1	450.1	293.7	98.7	56.7	23.9	1,859.3
	August	162.1	261.8	495.5	450.4	288.8	96.2	57.1	21.8	1,833.7
	September	175.1	266.5	507.0	457.2	294.8	100.8	60.3	22.0	1,883.8
	October	173.2	274.7	510.5	458.5	293.4	97.8	56.8	21.8	1,886.6
	November	178.0	266.4	506.6	452.4	291.9	102.7	55.7	24.0	1,877.6
	December	195.6	277.8	504.5	455.5	291.9	104.7	56.5	23.3	1,909.9
1987 -	January	190.7	270.6	495.5	442.7	280.1	102.8	54.7	22.4	1,859.5
	February	179.3	278.4	506.2	453.0	284.4	105.6	55.3	25.2	1,887.4
	March	178.9	278.8	518.8	463.3	295.2	108.9	57.4	27.1	1,928.5
	April	179.8	280.3	519.6	464.3	286.3	104.1	54.9	30.1	1,919.3
	May	179.5	281.9	519.6	467.4	294.6	104.8	56.0	25.0	1,928.9
	June	173.7	279.6	522.2	470.3	290.1	107.2	55.8	29.8	1,928.7
	July	185.5	282.1	518.8	471.8	298.6	105.9	53.6	29.2	1,945.5
	August	167.9	277.7	524.1	474.7	299.9	105.9	53.4	27.4	1,931.2

TABLE 3.2 UNEMPLOYED PERSONS: WHETHER LOOKING FOR FULL-TIME OR PART-TIME WORK, VICTORIA ('000)

August	Males			Females			Persons			Unemployment rate per cent
	Looking for full-time work	Looking for part-time work	Total	Looking for full-time work	Looking for part-time work	Total	Looking for full-time work	Looking for part-time work	Total	
1967	7.5	*	9.4	7.1	*	10.4	14.7	5.2	19.8	1.4
1968	7.7	*	10.2	6.5	4.9	11.4	14.2	7.5	21.6	1.5
1969	7.6	*	7.8	6.2	*	9.6	13.8	*	17.4	1.2
1970	7.9	*	8.4	4.2	*	7.5	12.0	*	16.0	1.1
1971	10.2	*	11.9	8.1	*	9.5	16.3	5.2	21.4	1.4
1972	17.5	*	20.0	10.8	6.6	17.5	28.4	9.1	37.4	2.3
1973	7.8	7.2	15.0	8.8	5.3	14.1	16.6	12.4	29.0	1.8
1974	15.9	*	18.0	17.3	6.0	23.3	33.2	8.1	41.3	2.5
1975	29.9	7.1	37.0	27.3	14.8	40.9	57.2	20.8	77.9	4.7
1976	27.9	7.3	35.2	23.3	12.1	35.4	51.2	19.4	70.6	4.2
1977	34.4	7.5	41.9	30.4	17.7	48.1	64.8	25.2	90.0	5.2
1978	47.6	4.1	51.7	34.1	15.0	49.1	81.7	19.0	100.8	5.8
1979	46.1	*	49.4	31.5	14.8	46.3	77.6	18.1	95.7	5.5
1980	49.1	4.1	53.1	38.0	12.8	50.8	87.0	16.9	103.9	5.8
1981	46.1	4.2	50.3	36.7	13.6	50.4	82.8	17.9	100.7	5.5
1982	55.1	7.1	62.3	33.9	13.9	47.8	89.0	21.1	110.1	6.0
1983	86.5	6.0	92.5	52.9	17.8	70.7	139.4	23.8	163.2	8.9
1984	68.8	6.3	75.2	39.5	15.2	54.8	108.4	21.6	129.9	7.0
1985	60.1	5.9	66.0	35.0	16.2	51.2	94.8	22.1	117.2	6.2
1986	66.4	8.1	74.5	38.7	19.5	58.2	105.1	27.6	132.7	6.7
1987	56.6	8.1	64.7	35.8	21.5	57.3	92.4	29.6	122.0	5.9

UNEMPLOYMENT RATES, VICTORIA AND AUSTRALIA (August)

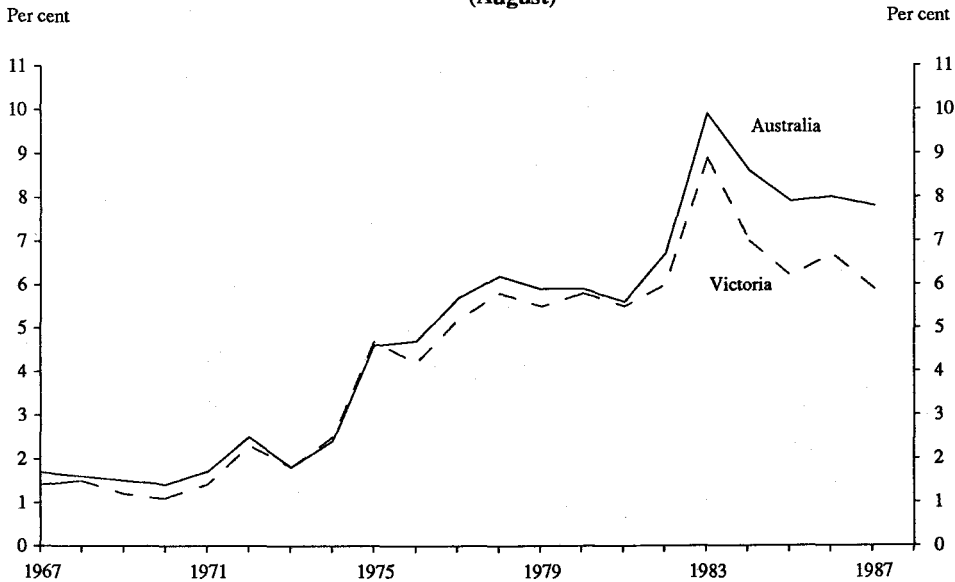


TABLE 3.3 UNEMPLOYED PERSONS, BY AGE AND SEX, VICTORIA ('000)

August	Age group (years)											
	15 to 19			20-24			25 and over			Total		
	Males	Females	Persons	Males	Females	Persons	Males	Females	Persons	Males	Females	Persons
1967	*	*	6.7	*	*	*	4.5	5.2	9.7	9.4	10.4	19.8
1968	*	*	6.5	*	*	*	4.8	6.8	11.6	10.2	11.4	21.6
1969	*	*	5.0	*	*	*	4.9	4.5	9.4	7.8	9.6	17.5
1970	*	*	4.1	*	*	*	4.7	4.4	9.2	8.4	7.5	16.0
1971	*	*	4.2	*	*	4.7	7.3	5.1	12.5	11.9	9.5	21.4
1972	6.4	*	10.2	*	*	6.6	10.3	10.4	20.6	20.0	17.5	37.5
1973	5.5	4.0	9.5	4.0	*	6.1	5.4	8.0	13.5	15.0	14.1	29.0
1974	4.2	5.8	9.9	*	*	6.8	10.9	13.6	24.5	18.0	23.3	41.3
1975	9.4	15.7	25.1	6.7	6.2	12.9	21.0	19.1	40.0	37.0	40.9	77.9
1976	11.8	12.2	24.0	7.5	6.0	13.6	15.9	17.1	33.0	35.2	35.4	70.6
1977	13.5	19.2	32.7	6.4	9.5	15.9	22.0	19.4	41.4	41.9	48.1	90.0
1978	15.8	16.4	32.3	10.8	10.1	20.9	25.1	22.6	47.6	51.7	49.1	100.8
1979	13.5	16.9	30.4	10.2	8.0	18.2	25.7	21.4	47.1	49.4	46.3	95.7
1980	15.4	16.0	31.3	14.3	10.6	24.9	23.0	24.1	47.1	52.7	50.6	103.3
1981	13.6	16.7	30.5	11.8	10.5	22.3	24.7	23.2	47.8	50.3	50.4	100.7
1982	18.3	13.4	31.8	15.2	9.6	24.8	28.7	24.8	53.5	62.3	47.8	110.1
1983	20.4	24.0	44.3	20.3	13.8	34.0	51.9	33.0	84.9	92.5	70.7	163.2
1984	18.8	18.7	37.4	15.6	12.0	27.6	40.8	24.1	65.0	75.2	54.8	129.9
1985	17.5	14.6	32.2	12.8	11.1	23.9	35.6	25.5	61.1	66.0	51.2	117.2
1986	21.1	16.9	38.0	14.9	11.1	26.0	38.5	30.2	68.7	74.5	58.2	132.7
1987	16.1	16.7	32.8	11.1	12.6	23.8	37.5	27.9	65.4	64.7	57.3	122.0

TABLE 3.4 CIVILIAN POPULATION AGED 15 YEARS AND OVER BY LABOUR FORCE STATUS, VICTORIAN REGIONS, AUGUST 1987

Region	Employed					Unemp- loyed force (^{'000})	Labour force (^{'000})	Not in Unemp- labour loymen- force rate (^{'000})	Partici- pation rate (Per cent)
	Full- time (^{'000})	Part- time (^{'000})	Total (^{'000})	Unemp-loyed					
				Force	Rate				
MALES									
Melbourne Statistical Division -	773.6	55.1	828.7	40.8	869.6	276.1	4.7	75.9	
Western Melbourne	159.5	7.7	167.3	9.3	176.6	53.2	5.3	76.8	
Inner Melbourne	73.7	8.8	82.5	6.4	88.9	39.7	7.2	69.1	
North Eastern Melbourne	104.7	*	108.5	5.7	114.2	35.4	5.0	76.3	
Inner Eastern Melbourne	131.6	13.2	144.8	5.9	150.7	43.5	3.9	77.6	
Southern Melbourne	82.1	9.0	91.0	*	93.8	43.7	*	68.2	
Outer Eastern Melbourne	85.7	4.6	90.3	*	93.4	18.5	*	83.5	
Mornington Peninsula	136.2	8.2	144.4	7.6	152.0	42.1	5.0	78.3	
Rest of Victoria -	302.4	24.1	326.5	23.9	350.4	114.6	6.8	75.4	
South Western Victoria	72.5	5.3	77.8	5.5	83.4	28.8	6.6	74.3	
North Western Victoria	63.7	7.0	70.7	4.7	75.5	24.4	6.3	75.6	
Northern Victoria	101.7	7.2	108.9	8.0	116.9	38.9	6.9	75.0	
Eastern Victoria	64.5	4.5	69.1	5.6	74.7	22.6	7.5	76.8	
Total Victoria	1,076.0	79.3	1,155.3	64.7	1,220.0	390.6	5.3	75.7	

TABLE 3.4 CIVILIAN POPULATION AGED 15 YEARS AND OVER BY LABOUR FORCE STATUS, VICTORIAN REGIONS, AUGUST 1987 - continued

Region	Employed			Unemp- loyed (^{'000})	Labour force (^{'000})	Not in labour force (^{'000})	Unemp- loyment rate (Per cent)	Partici- pation rate
	Full- time (^{'000})	Part- time (^{'000})	Total (^{'000})					
MARRIED FEMALES								
Melbourne Statistical Division -	179.4	148.9	328.3	16.0	344.3	337.1	4.6	50.5
Western Melbourne	43.3	29.8	73.1	*	76.2	71.6	*	51.6
Inner Melbourne	15.3	7.8	23.2	*	24.2	24.0	*	50.1
North Eastern Melbourne	25.9	19.5	45.4	*	46.7	47.3	*	49.7
Inner Eastern Melbourne	23.4	25.6	49.0	*	52.4	59.8	*	46.7
Southern Melbourne	18.1	14.6	32.7	*	33.3	45.5	*	42.3
Outer Eastern Melbourne	19.5	20.0	39.5	*	42.7	32.8	*	56.5
Mornington Peninsula	33.9	31.5	65.4	*	68.8	56.1	*	55.1
Rest of Victoria -	64.1	70.7	134.7	6.3	141.1	150.8	4.5	48.3
South Western Victoria	13.8	17.7	31.5	*	32.4	40.8	*	44.3
North Western Victoria	15.6	14.7	30.3	*	30.9	30.9	*	50.0
Northern Victoria	23.5	23.6	47.0	*	49.7	50.2	*	49.8
Eastern Victoria	11.3	14.7	25.9	*	28.0	28.9	*	49.2
Total Victoria	243.5	219.5	463.0	22.3	485.3	487.9	4.6	49.9
ALL FEMALES								
Melbourne Statistical Division -	365.4	208.8	574.2	38.6	612.7	588.4	6.3	51.0
Western Melbourne	74.9	36.9	111.8	7.9	119.7	115.0	6.6	51.0
Inner Melbourne	50.6	18.1	68.7	4.5	73.2	62.2	6.1	54.1
North Eastern Melbourne	49.7	28.1	77.7	*	81.6	75.7	*	51.9
Inner Eastern Melbourne	59.7	39.1	98.8	6.9	105.7	110.0	6.6	49.0
Southern Melbourne	41.7	21.3	62.9	*	65.9	83.5	*	44.1
Outer Eastern Melbourne	32.6	24.8	57.4	4.6	61.9	51.9	7.4	54.4
Mornington Peninsula	56.3	40.6	96.8	7.8	104.6	90.1	7.5	53.7
Rest of Victoria -	109.1	92.6	201.8	18.7	220.5	251.4	8.5	46.7
South Western Victoria	24.3	23.5	47.8	*	50.6	66.4	*	43.2
North Western Victoria	25.6	19.5	45.0	*	48.0	52.6	*	47.7
Northern Victoria	39.7	30.9	70.7	8.3	79.0	81.7	10.5	49.2
Eastern Victoria	19.6	18.7	38.3	4.6	42.9	50.7	10.8	45.8
Total Victoria	474.5	301.4	775.9	57.3	833.2	839.7	6.9	49.8
PERSONS								
Melbourne Statistical Division -	1,139.0	263.9	1,402.9	79.4	1,482.3	864.4	5.4	63.2
Western Melbourne	234.4	44.6	279.1	17.3	296.3	168.2	5.8	63.8
Inner Melbourne	124.3	26.9	151.2	10.9	162.1	101.9	6.7	61.4
North Eastern Melbourne	154.4	31.8	186.2	9.6	195.8	111.1	4.9	63.8
Inner Eastern Melbourne	191.3	52.3	243.5	12.8	256.4	153.4	5.0	62.6
Southern Melbourne	123.7	30.2	154.0	5.7	159.7	127.2	3.6	55.7
Outer Eastern Melbourne	118.3	29.3	147.6	7.7	155.3	70.4	5.0	68.8
Mornington Peninsula	192.5	48.8	241.2	15.4	256.6	132.2	6.0	66.0
Rest of Victoria -	411.6	116.7	528.3	42.6	570.9	365.9	7.5	60.9
South Western Victoria	96.8	28.8	125.6	8.3	133.9	95.1	6.2	58.5
North Western Victoria	89.3	26.5	115.8	7.7	123.5	77.0	6.3	61.6
Northern Victoria	141.4	38.1	179.5	16.3	195.9	120.6	8.3	61.9
Eastern Victoria	84.1	23.2	107.3	10.2	117.6	73.3	8.7	61.6
Total Victoria	1,550.5	380.6	1,931.2	122.0	2,053.2	1,230.4	5.9	62.5

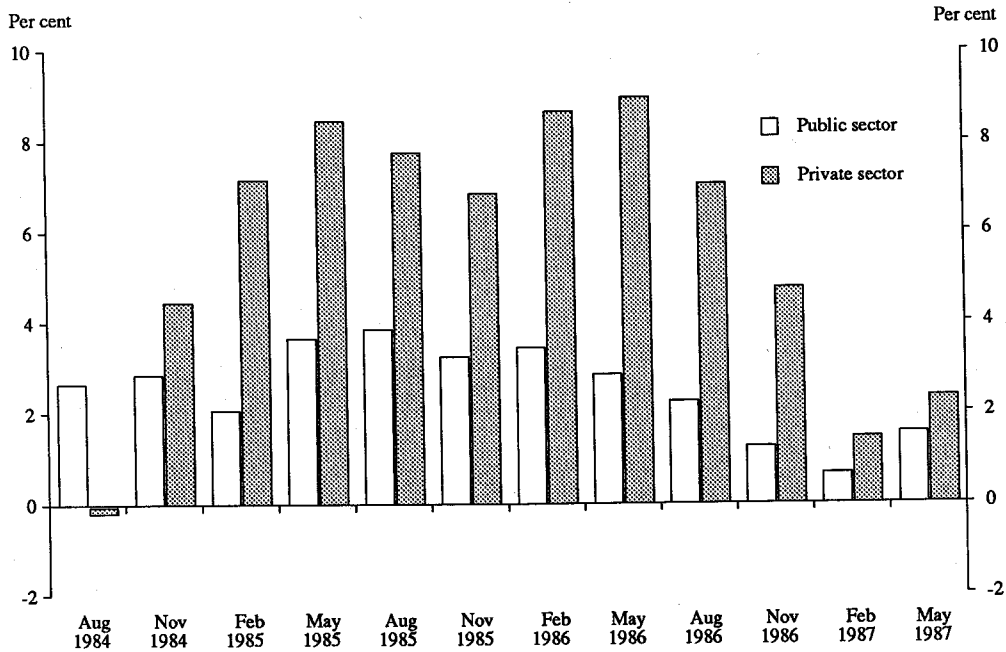
TABLE 3.5 EMPLOYED WAGE AND SALARY EARNERS BY INDUSTRY, VICTORIA
(^{'000})

Industry division or subdivision	August							
	1980	1981	1982	1983	1984	1985	1986	1987
Agriculture, forestry, fishing, and hunting - Agriculture, and services to agriculture	22.8	26.1	25.9	23.9	29.4	28.1	22.8	24.2
Mining	*	5.5	4.5	5.8	5.1	5.8	5.2	7.5
Manufacturing -	403.9	389.5	377.9	371.0	373.5	381.2	354.9	372.9
Food, beverages, and tobacco	51.9	49.6	49.0	55.1	50.2	54.0	41.4	52.5
Metal products	39.6	48.0	47.8	50.4	44.5	43.0	42.2	47.5
Other manufacturing	312.4	291.9	281.1	265.5	278.8	284.2	271.3	272.9
Electricity, gas, and water	41.8	37.7	41.1	34.3	44.7	40.1	40.4	33.6
Construction	65.9	70.9	59.6	57.2	56.5	68.4	77.7	76.8
Wholesale and retail trade -	268.9	265.7	262.7	252.6	267.5	278.1	277.0	296.4
Wholesale trade	86.2	96.6	87.0	77.4	81.1	99.8	90.6	98.9
Retail trade	182.7	169.1	175.8	175.2	186.5	178.3	186.4	197.6
Transport and storage	70.9	74.4	81.8	79.5	71.9	69.8	80.4	78.0
Communication	29.1	36.2	37.2	40.3	34.8	36.5	38.5	39.9
Finance, property, and business services	114.7	135.6	139.6	126.6	135.9	145.8	168.8	174.6
Public administration and defence	79.3	82.8	75.8	84.3	80.5	89.1	88.0	96.3
Community services	260.8	260.1	277.5	268.7	286.6	297.6	312.1	342.3
Recreation, personal, and other services	69.4	80.2	69.2	72.3	76.6	74.6	71.2	89.6
Total employed	1,430.9	1,464.7	1,453.0	1,416.2	1,463.0	1,515.1	1,537.0	1,632.3

TABLE 3.6 EMPLOYED WAGE AND SALARY EARNERS BY SECTOR: VICTORIA
(^{'000})

	Commonwealth Government	State Government	Local Government	Total Public sector	Private sector	Total
1984 -						
February	100.6	280.9	37.8	419.3	947.8	1,367.0
May	100.4	282.2	38.5	421.1	948.2	1,369.3
August	100.0	291.3	39.7	431.0	962.3	1,393.3
November	100.6	292.8	39.5	432.9	1,000.5	1,433.4
1985 -						
February	101.5	287.5	39.3	428.3	1,016.4	1,444.7
May	101.9	294.6	40.3	436.8	1,028.4	1,465.2
August	100.6	305.3	41.8	447.7	1,037.8	1,485.6
November	101.2	304.2	41.8	447.2	1,069.2	1,516.4
1986 -						
February	101.6	300.1	41.7	443.4	1,104.7	1,548.1
May	103.3	304.1	41.9	449.4	1,120.6	1,569.9
August	102.1	312.9	42.8	457.8	1,111.9	1,569.7
November	100.4	309.8	42.8	452.9	1,120.4	1,573.3
1987 -						
February	101.1	302.7	42.7	446.5	1,121.2	1,567.7
May	99.9	313.7	43.2	456.8	1,147.2	1,604.0

GROWTH IN THE NUMBER OF EMPLOYEES BY SECTOR: VICTORIA, YEARS ENDING AUGUST 1984 TO MAY 1987



GROWTH IN THE NUMBER OF EMPLOYEES IN THE PUBLIC SECTOR, VICTORIA, YEARS ENDING AUGUST 1984 TO MAY 1987

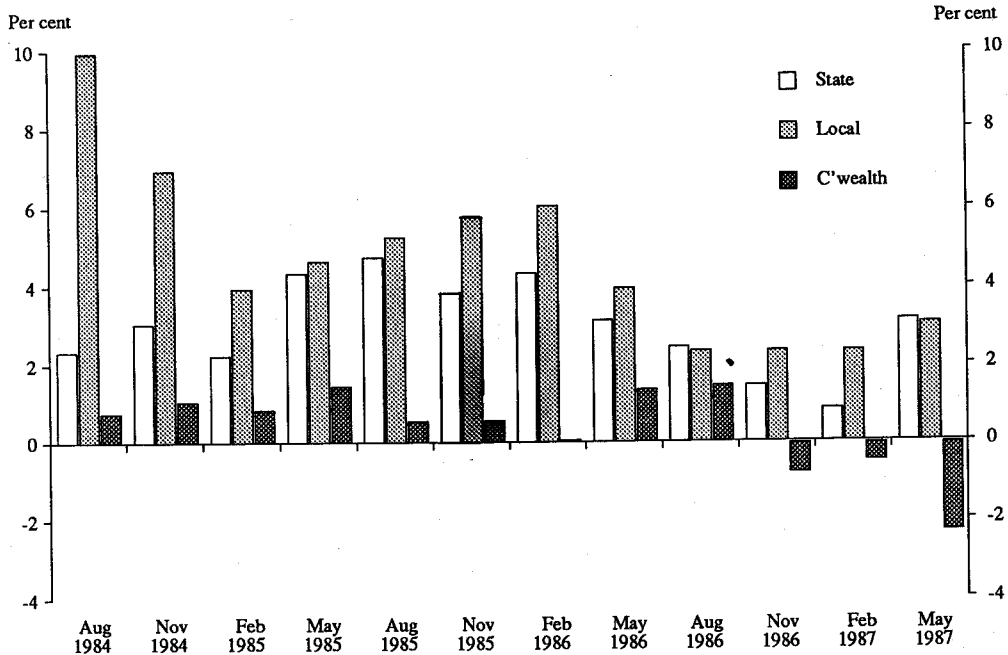


TABLE 3.7 EMPLOYED PERSONS: INDUSTRY BY OCCUPATION, VICTORIA, AUGUST 1987
(^{'000})

Industry division or sub-division	Occupation group								Total
	Managers and administrators	Professionals	Para- professionals	Trade persons	Clerks	Salespersons and personal service workers	Plant and machine operators and drivers	Labourers and related workers	
Agriculture, forestry, fishing, and hunting -	69.4	*	*	5.0	*	*	*	17.4	96.0
Agriculture and services to agriculture	69.0	*	*	4.6	*	*	*	16.2	93.0
Mining	*	*	*	*	*	*	*	*	7.7
Manufacturing -	27.1	20.6	10.2	106.8	38.9	13.5	85.1	92.1	394.1
Food, beverages, and tobacco	*	*	*	9.8	*	*	13.4	18.6	52.9
Metal products	*	*	*	14.8	7.0	*	8.3	11.2	49.9
Other manufacturing	19.9	18.4	6.9	82.1	29.3	9.1	63.3	62.2	291.3
Electricity, gas, and water	*	*	5.8	9.4	5.9	*	4.1	4.1	33.6
Construction	6.9	*	*	77.4	14.0	*	6.0	18.4	128.4
Wholesale and retail trade -	63.8	9.9	5.4	50.5	47.4	141.5	12.4	38.4	369.3
Wholesale trade	19.3	6.5	*	7.7	26.0	23.8	8.5	14.0	109.2
Retail trade	44.5	*	*	42.7	21.4	117.7	*	24.5	260.0
Transport and storage	4.9	*	*	7.0	18.6	8.6	40.3	10.1	95.4
Communication	*	*	*	8.7	17.9	*	*	*	40.2
Finance, property, and business services	18.2	41.3	7.9	*	79.2	32.4	*	14.8	199.0
Public administration and defence	*	13.6	8.7	6.8	38.0	4.2	5.5	15.7	96.3
Community services	12.7	145.7	63.0	10.9	55.1	22.0	4.6	43.3	357.2
Recreation, personal, and other services	13.3	10.9	5.5	26.2	6.8	29.0	*	21.4	114.0
Total employed	224.4	254.1	118.1	312.8	324.6	252.2	165.4	279.7	1,931.2

TABLE 3.8 AVERAGE WEEKLY HOURS WORKED BY EMPLOYED WAGE AND SALARY EARNERS BY INDUSTRY, VICTORIA
(hours)

Industry division or subdivision	August					
	1982	1983	1984	1985	1986	1987
Agriculture and services to agriculture	39.3	36.0	39.2	39.4	39.5	37.5
Mining	41.6	38.4	34.1	41.6	41.0	42.7
Manufacturing -	37.0	36.8	37.4	37.6	38.1	37.7
Food, beverage, and tobacco	34.9	36.3	37.5	36.8	38.1	35.3
Metal products	38.2	37.7	37.6	38.0	39.2	39.5
Other manufacturing	37.2	36.8	37.4	37.6	37.9	37.9
Electricity, gas, and water	35.4	36.3	34.4	35.2	36.6	36.7
Construction	37.1	36.0	37.3	36.3	38.1	38.0
Wholesale and retail trade -	33.4	33.1	33.8	33.4	34.0	32.7
Wholesale trade	37.7	38.2	38.2	38.5	38.7	39.2
Retail trade	31.3	30.8	31.3	30.5	31.7	29.5
Transport and storage	37.3	38.1	37.3	38.0	38.2	38.4
Communication	32.3	31.0	33.9	34.8	34.1	33.1
Finance, property, and business services	34.4	35.3	34.6	36.6	37.4	35.4
Public administration and defence	33.2	33.1	35.0	31.6	32.9	31.9
Community services	32.6	33.6	33.6	31.9	32.3	32.4
Recreation, personal, and other services	29.1	29.6	32.4	29.8	31.1	29.7
Total	34.6	34.7	35.1	34.7	35.4	34.6

**AWARD RATES OF PAY AND AVERAGE WEEKLY EARNINGS:
ANNUAL CHANGE, VICTORIA**

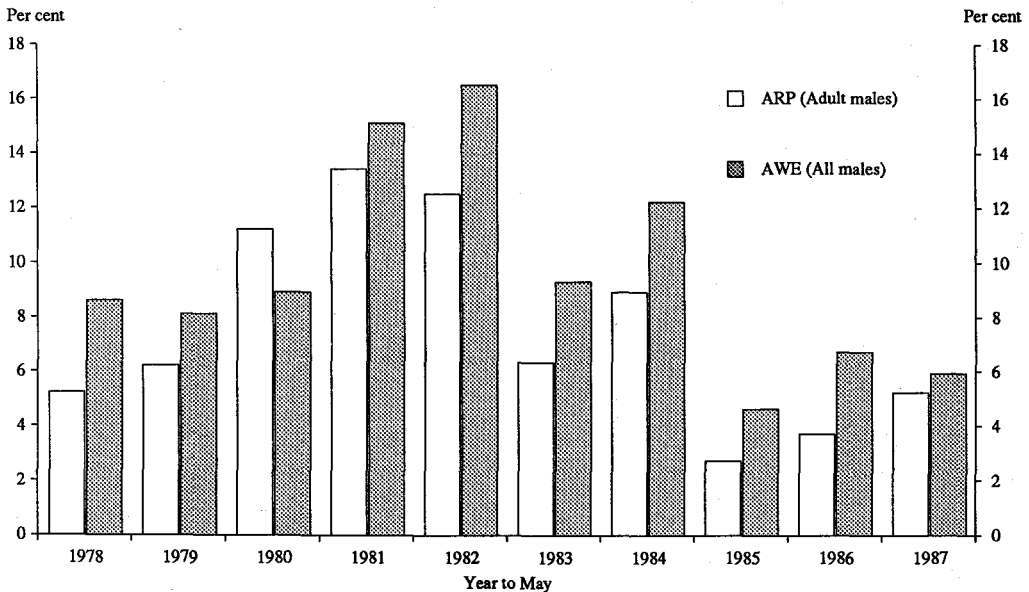


TABLE 3.9 AVERAGE WEEKLY EARNINGS: FULL TIME ADULT EMPLOYEES BY INDUSTRY, VICTORIA
(\$)

Industry	May 1985			May 1986			May 1987		
	Males	Females	Persons	Males	Females	Persons	Males	Females	Persons
Mining	577.40	406.20	561.10	603.10	439.70	591.00	667.70	452.90	649.90
Manufacturing -									
Food, beverage, and tobacco	389.30	294.60	365.20	424.40	331.20	399.30	476.60	343.50	436.60
Textile, clothing, and footwear	388.60	269.80	314.50	347.30	259.30	298.90	463.20	330.60	390.70
Paper, etc.	448.30	304.80	405.60	514.10	335.60	449.80	504.60	361.20	470.00
Chemical, petroleum, and coal products	466.10	334.80	430.10	522.60	355.10	481.40	582.20	398.20	532.30
Metal products, machinery, and equipment -									
Basic metal products	477.00	355.00	464.20	493.00	402.90	483.50	570.90	411.70	552.40
Fabricated metal products, other machinery, etc.	410.20	299.60	386.00	440.00	321.80	414.60	485.70	338.30	450.20
Transport equipment	431.30	296.20	403.10	439.80	317.30	422.00	484.90	346.90	462.20
Total metal products etc.	425.70	300.40	400.00	444.70	324.30	423.40	493.10	344.20	462.80
Other manufacturing	410.70	289.30	371.70	438.60	304.40	394.40	483.40	345.40	438.00
Total manufacturing	417.70	292.90	383.80	441.40	309.80	406.40	487.90	345.00	448.40
Electricity, gas, and water	482.70	359.10	472.40	501.20	377.50	490.10	527.60	394.20	515.40
Construction	395.00	301.10	380.50	450.50	296.60	433.00	519.20	294.90	492.90
Wholesale trade	411.20	333.70	390.80	451.00	353.70	424.00	476.90	419.00	462.80
Retail trade	342.70	285.80	323.80	354.80	314.10	340.70	416.30	320.50	384.70
Transport and storage, communication	452.60	410.40	445.50	460.20	419.30	453.00	492.80	442.20	484.70
Finance, business services	457.70	341.30	410.00	507.50	364.80	449.10	573.50	413.30	513.30
Public administration, community services, etc.	466.80	400.10	435.20	502.10	417.20	461.80	529.00	453.30	490.60
Other industries	382.90	301.80	351.80	433.30	343.50	398.40	490.20	380.50	451.00
Total all industries	431.80	349.20	405.00	460.90	368.40	431.20	501.20	401.70	469.10

LABOUR

TABLE 3.10 WEEKLY EARNINGS OF ALL WAGE AND SALARY EARNERS IN MAIN JOB BY AGE, VICTORIA, AUGUST 1986 ('000)

Weekly earnings (\$)	Age group (years)							
	15-19	20-24	25-34	35-44	45-54	55 and over	20 and over	Total
0 - 39	25.0	} 7.6	11.3	12.4	6.1	} 6.3	{ 13.9	38.9
40 - 79	14.1		12.4	6.1	6.3		{ 29.6	43.8
80 - 119	12.7	7.6	11.6	12.0	8.4	} 5.0	{ 42.2	54.9
120 - 159	23.7	7.3	12.6	12.4	7.4		{ 42.0	65.7
160 - 199	29.0	12.3	13.8	12.2	7.3	4.1	49.7	78.7
200 - 239	24.6	20.1	18.7	20.5	17.0	8.7	84.9	109.5
240 - 279	16.0	45.9	38.5	28.5	22.3	10.0	145.2	161.1
280 - 319	5.0	46.9	46.9	36.9	32.2	17.2	180.1	185.1
320 - 359	*	35.1	60.0	37.7	24.3	19.7	176.8	179.1
360 - 399	*	21.3	47.4	26.1	19.6	11.7	126.1	127.0
400 - 439	*	14.7	42.0	32.4	15.6	8.8	113.5	114.0
440 - 479	*	8.1	30.1	20.5	10.3	5.3	74.5	75.0
480 - 519	*	7.9	30.3	20.8	14.5	5.0	78.5	78.8
520 - 559	*	} 4.5	{ 21.6	22.0	8.1	6.4	60.3	60.3
560 - 599	*			{ 10.3	11.1	7.2	*	33.1
600 and over	*	4.4	33.2	46.4	22.3	12.9	119.2	119.4
Total	154.9	243.7	428.1	351.8	222.4	123.6	1,369.5	1,524.5

Industrial disputes

Following a large number of working days lost in Victoria due to industrial disputes in 1981, the number of days lost remained relatively stable between 1982 and 1986. The main features of 1986 were major disputes in the meat, metal, motor vehicle, and construction industries relating to the national wage claim, while a nurses' dispute in October and November resulted in significant time lost.

Trade union membership

Total reported membership of trade unions at August 1986 was 695,600 or 46 per cent of all employees. Sixty-four per cent of trade unionists were male. Approximately 50 per cent of male employees belonged to a trade union compared with 40 per cent of female employees. The Communication industry had the highest concentration of trade union membership with 78 per cent of all employees being a member of a trade union. The Agriculture, forestry, fishing, and hunting industry is the lowest with only 15 per cent of its employees members of a trade union. The Manufacturing industry, which has the largest number of employees (358,100), had 186,500 (52 per cent) who were members of a trade union.

TABLE 3.11 INDUSTRIAL DISPUTES: INDUSTRIES, WORKING DAYS LOST, VICTORIA ('000)

Period	Manufacturing			Construction	Transport, storage and communication	Other industries	All industries
	Mining	Metal products, machinery, and equipment	Other				
1981	22.2	474.7	280.9	106.2	163.3	188.2	1,235.5
1982	4.5	65.2	187.5	60.6	8.0	42.2	368.0
1983	8.8	31.0	43.4	47.2	53.5	73.8	257.7
1984	2.9	40.9	78.9	17.0	13.3	33.3	186.4
1985	5.7	36.1	56.7	47.3	67.5	142.7	355.9
1986	-	58.4	85.2	34.9	11.3	192.0	381.8
1987 -							
January	0.2	0.3	1.3	0.4	-	1.4	3.5
February	-	2.0	11.1	0.3	0.1	6.2	19.6
March	-	3.5	7.5	8.0	1.1	0.8	20.9
April	-	1.2	5.6	-	2.2	2.1	11.0
May	-	5.6	18.3	-	2.9	0.7	27.6
June	-	9.0	7.3	-	0.4	-	16.8

TABLE 3.12 ALL EMPLOYEES: INDUSTRY, FULL-TIME OR PART-TIME STATUS IN MAIN JOB, SECTOR, AND WHETHER A MEMBER OF A TRADE UNION, VICTORIA, AUGUST 1986 ('000)

Industry	Males			Females			Persons		
	Full-time	Part-time	Total (a)	Full-time	Part-time	Total (a)	Total (a)	Public	Private (b)
MEMBER OF A TRADE UNION									
Agriculture, forestry, fishing and hunting	*	*	*	*	*	*	*	*	*
Mining	*	*	*	*	*	*	*	*	*
Manufacturing	109.9	17.5	132.6	40.2	12.1	53.9	186.5	8.8	177.7
Electricity, gas, and water	22.2	6.2	30.0	*	*	*	31.6	31.0	*
Construction	29.6	6.8	37.8	*	*	*	38.3	4.7	33.7
Wholesale and retail trade	26.4	9.9	37.9	16.6	17.7	36.9	74.9	*	73.7
Transport and storage	38.5	7.3	49.3	4.8	*	6.8	56.1	33.0	23.2
Communication	17.2	4.2	23.6	4.9	*	6.7	30.4	30.4	*
Finance, property, and business services	21.5	*	24.9	18.9	6.1	26.4	51.3	14.3	37.0
Public administration and defence	26.6	6.6	36.6	9.4	4.7	14.3	50.9	50.0	*
Community services	49.9	6.1	58.8	54.2	31.9	93.8	152.6	128.7	23.8
Recreation, personal and other services	7.4	*	9.9	*	*	7.7	17.7	*	14.5
Total	352.8	70.0	446.2	154.2	79.5	249.4	695.6	305.8	389.7

TABLE 3.12 ALL EMPLOYEES: INDUSTRY, FULL-TIME OR PART-TIME STATUS IN MAIN JOB, SECTOR, AND WHETHER A MEMBER OF A TRADE UNION, VICTORIA, AUGUST 1986 - continued
(*000)

Industry	Males			Females			Persons		
	Full-time	Part-time	Total (a)	Full-time	Part-time	Total (a)	Total (a)	Public	Private (b)
NOT A MEMBER OF A TRADE UNION									
Agriculture, forestry, fishing and hunting	10.7	*	14.0	*	*	4.1	18.2	*	17.4
Mining	*	*	*	*	*	*	*	*	*
Manufacturing	95.8	12.5	110.9	32.6	21.3	55.2	166.1	*	163.6
Electricity, gas, and water	5.9	*	8.0	*	*	*	9.8	9.6	*
Construction	25.6	4.1	31.3	*	4.9	7.8	39.0	*	37.9
Wholesale and retail trade	93.8	15.3	114.9	42.4	33.2	79.7	194.6	*	193.2
Transport and storage	12.6	*	13.9	5.3	*	7.6	21.5	*	18.4
Communication	*	*	4.3	*	*	4.1	8.4	7.6	*
Finance, property, and business services	44.8	7.2	52.8	36.4	17.5	55.7	108.5	6.7	101.8
Public administration and defence	13.5	4.4	18.8	8.3	9.3	18.4	37.2	36.8	*
Community services	34.6	9.1	46.0	40.5	62.6	108.3	154.3	67.2	87.0
Recreation, personal, and other services	16.3	4.4	21.8	9.1	19.3	29.9	51.7	*	49.2
Total	359.3	63.1	438.9	183.4	174.2	373.1	812.0	139.4	672.7
TOTAL (c)									
Agriculture, forestry, fishing and hunting	12.9	*	16.4	*	*	4.8	21.2	*	20.0
Mining	*	*	4.7	*	*	*	5.2	*	5.0
Manufacturing	208.9	31.0	247.6	74.0	33.7	110.5	358.1	11.3	346.8
Electricity, gas, and water	28.1	7.8	38.0	*	*	*	41.4	40.5	*
Construction	55.3	10.9	69.4	*	5.1	8.2	77.6	5.9	71.8
Wholesale and retail trade	122.6	25.1	155.2	60.1	51.3	118.2	273.4	*	270.6
Transport and storage	51.3	8.4	63.5	10.4	*	14.9	78.3	36.3	42.0
Communication	20.7	4.9	27.9	7.9	*	11.0	39.0	38.2	*
Finance, property, and business services	67.6	9.9	79.0	56.5	23.7	83.2	162.3	21.0	141.3
Public administration and defence	40.6	11.2	56.1	18.1	14.0	33.2	89.2	87.9	*
Community services	85.6	15.3	105.9	94.7	95.1	202.8	308.6	197.1	111.5
Recreation, personal, and other services	23.8	6.5	31.8	13.2	23.1	38.3	70.1	5.9	64.1
Total	721.3	134.3	895.5	342.5	255.1	629.0	1,524.5	448.3	1,076.1

(a) Includes persons for whom full-time or part-time status in main job could not be determined.

(b) Includes persons for whom sector could not be determined.

(c) Includes persons who did not know their membership status.

REFERENCES

Data sources

Currently, the ABS's principal sources of labour statistics are *household surveys* and *employer based surveys*. The ABS conducts a monthly household based labour force survey which provides estimates at a National, State and regional level. The major statistical indicators produced from the labour force survey are persons employed and unemployed, classified by age, sex, and marital status, expressed as a proportion of the civilian population aged 15 years and over.

Emphasis in the labour force survey is placed on the regular collection of data on demographic and labour force characteristics, but additional questions to investigate particular aspects of the labour force are frequently included.

At present the ABS conducts sample surveys of employers, based on the ABS register of businesses and organisations. Since May 1983 the ABS has introduced new or upgraded quarterly surveys of: employment and earnings; average weekly earnings; overtime; job vacancies; and an annual Survey of employee earnings and hours.

During 1987 the ABS developed a range of labour costs surveys which are designed to identify the composition and rate of growth of labour costs.

ABS publications

- Monthly Summary of Statistics, Victoria* (1303.2)
- Monthly Summary of Statistics, Australia* (1304.0)
- Labour Statistics, Australia* (6101.0)
- The Labour Force, Australia, Preliminary* (6202.0)
- The Labour Force, Victoria* (6202.2)
- The Labour Force, Australia (monthly)* (6203.0)
- The Labour Force, Australia (annual)* (6204.0)
- Labour Force Experience and Mobility, Australia* (6206.0)
- Labour Force Experience, Victoria* (6206.2)
- Labour Mobility, Australia* (6209.0)
- Persons Not in the Labour Force, Australia* (6220.0)
- Job Search Experience of Unemployed Persons, Australia* (6222.0)
- Information Paper: Questionnaires Used in the Labour Force Survey, Australia* (6232.0)
- Employed Wage and Salary Earners, Australia* (6248.0)
- Information Paper: New Statistical Series: Employment, Average Weekly Earnings, Job Vacancies and Overtime* (6256.0)
- Information Paper: Victorian Labour Force Statistics* (6262.2)
- Average Weekly Earnings, States and Australia* (6302.0)
- Average Earnings and Hours of Employees, Australia* (6304.0)
- Weekly Earnings of Employees (Distribution), Australia* (6310.0)
- Award Rates of Pay Indexes, Australia* (6312.0)
- Industrial Disputes, Australia (monthly)* (6321.0)
- Industrial Disputes, Australia (quarterly)* (6322.0)
- Trade Union Statistics, Australia* (6323.0)
- Trade Union Members, Australia* (6325.0)